



# Comunidad de Aprendizaje EUDR / *Central American Learning Community on EUDR Compliance for Coffee*

Meeting of June 11th

**PROMECAFE**

Delegation of the UE to Costa Rica  
GIZ



# Agenda.

- Novedades del EUDR / *Updates on EUDR*
- Iniciativas del EUDR en implementación: Progresos y retos / *EUDR initiatives in implementation: Progress updates and challenges*
- Encuesta y investigación / *survey and investigation*



# 1. Updates.

## EUDR.

- A la espera de la actualización de las FAQ (debates en curso): en 2 semanas
- Directrices : finales de junio (uso agrícola, uso de la certificación, legalidad de la aplicación)+ Plantilla DDS.
- Sistema de información de la UE: sin novedades. (La API está hecha para el sistema de información de la UE).// Riesgos subyacentes
- Protesta de los Estados miembros de la UE MoAg. Sin retraso formal.
- Autoridades competentes: en preparación (no se indican todas las AC)



## EUDR.

- *Waiting for updated FAQ (ongoing discussions): within 2 weeks*
- *Guidelines : end of June (agricultural use, use of certification, implementation legality)+ Template DDS.*
- *EU Information system: no further news. (API is made for EU information system).// Underlying risks*
- *Protest by EU Member States MoAg. No formal delay.*
- *Competent Authorities: under preparation (not all CA indicated)*

# 1. Updates.

## CS3D.

- 24/5 votación final en el Consejo de la UE. Regulación típica de la diligencia debida: impacto ambiental y derechos humanos. Informes anuales y mitigación.
- Para todas las materias primas y empresas >1000 empleados. Primera aplicación en 3 años para empresas >5000 empleados. 5 años >1000

## MERCADO.



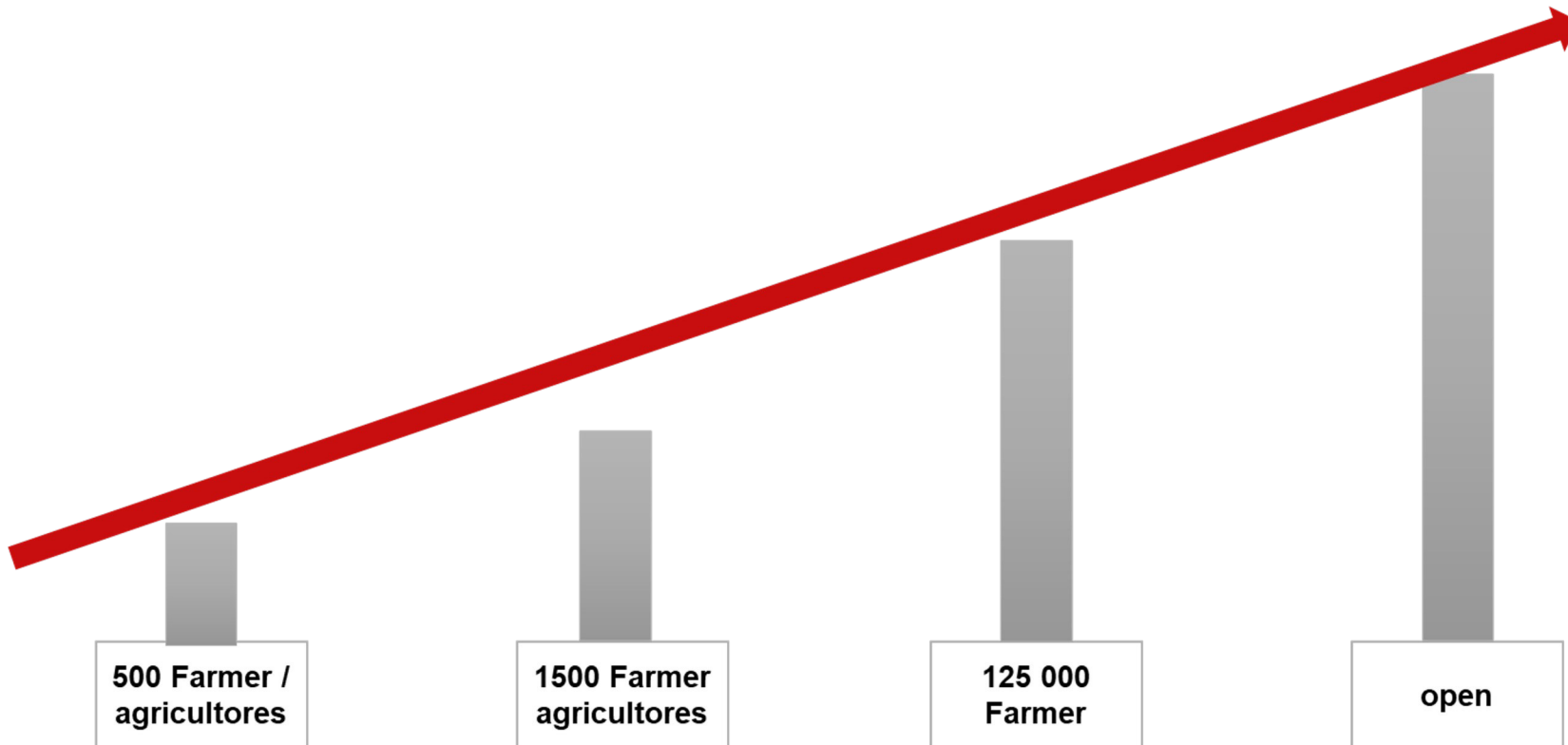
## CS3D.

- *24/5 final vote by EU Council. Typical due diligence regulation : environmental impact and human rights. Yearly reporting and mitigation.*
- *For all commodities and companies >1000 staff. First application in 3 years time for companies >5000 staff. 5 years >1000*

## MARKET.

# Resultados de la encuesta / results of the survey.

¿Cuántos agricultores estarían involucrados o están involucrados en la Iniciativa de Acción Temprana específica? / *How many farmers would be involved or are involved in the specific Early Action Initiative?*



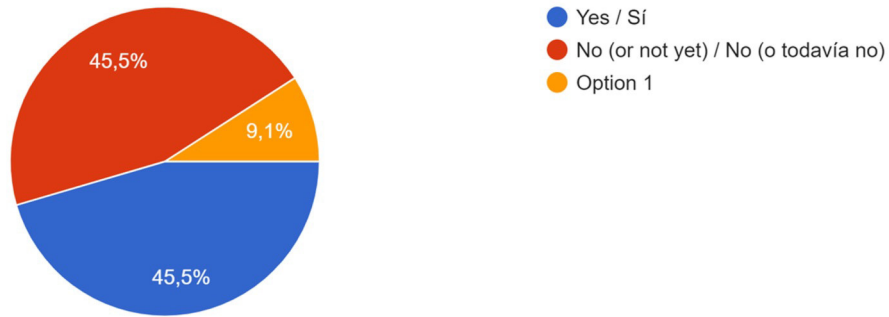
# Resultados de la encuesta / results of the survey.



## Plan para ampliación/ *Plans for Upscaling*

b) Do you have any concrete plans for upscaling this approach in Central America, beyond the EAI? / ¿Tiene algún plan concreto para ampliar este e... en Centroamérica, más allá de la EAI?

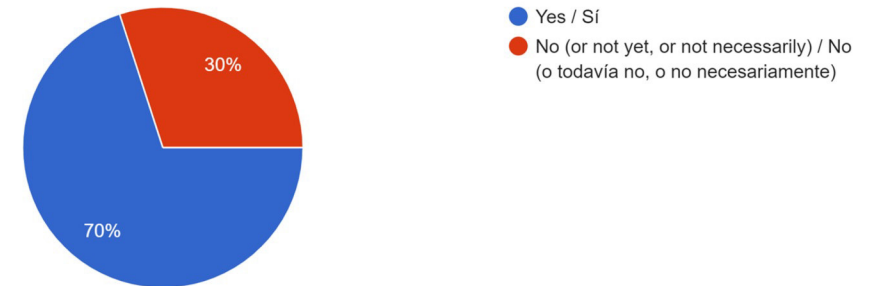
11 Antworten



## Involucramiento de otros actores/ *Involvement of other actores*

c) Are intermediaries, local exporters or other actors involved in risk assessment or traceability in your EAI? / ¿Están involucrados intermediarios, ex...evaluación de riesgos o la trazabilidad de su EAI?

10 Antworten



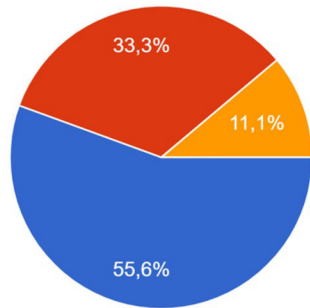
# Resultados de la encuesta / results of the survey.



## Recopilación de polígonos/ *Collection of Polygons*

a.) Have polygons/geolocations already been collected for your specific EAI?/ ¿Ya se han recopilado polígonos/geolocalizaciones para su EAI específica?

9 Antworten

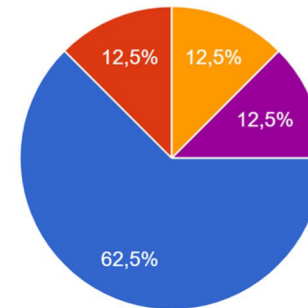


- Yes- for all/Sí, para todos
- No; ongoing – just starting/No; en curso – apenas comenzando
- Ongoing – about half way/En curso – a mitad de camino
- Ongoing - over half done/En curso, más de la mitad hecho

## Quién recopiló los polígonos?/ *Who collected the polygons?*

b) If yes (polygons/geolocations are (being) collected), who collected the polygons/geolocations (you can indicate different options)?/ En caso afirmativo...localizaciones (puede indicar diferentes opciones)?

8 Antworten



- Farmers, cooperative members with provided tools and guidance/ Agricultores y miembros de cooperativas con herramientas y orientación
- Consultants/Consultores
- Satellite images/Imágenes satelitales
- Self reading algorithm of service provider/ Algoritmo de autolectura del proveedor de servicios
- Extension agents of our partners

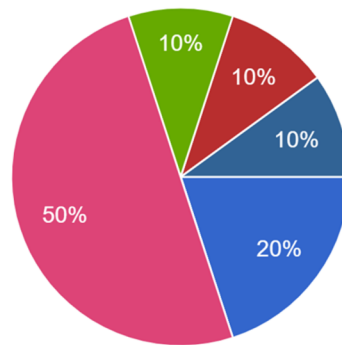
# Resultados de la encuesta / results of the survey.



## Desafíos/ Challenges

Please choose the top 3 challenges for EUDR implementation: Por favor, escoja los 3 principales desafíos para la implementación de EUDR: Lack of / Falta de...

10 Antworten



- ...of budget for implementation/ ... pre...
- ... knowledge of appropriate technolog...
- ... capacity for field data collection/ .....
- ... institutional support / ... apoyo instit...
- ... knowledge by the producers/ ... con...
- Difficulty in finding implementation par...
- ...Clarity of EUDR requirements/ ...clar...
- N/A

▲ 1/2 ▼



Comunidad de Aprendizaje EUDR /  
*Central American Learning Community on  
EUDR Compliance for Coffee*

**MUCHAS GRACIAS / THANK YOU !**

**PROMECAFE**

Delegation of the UE to Costa Rica  
GIZ



# Geolocalización y monitoreo forestal en el sector café

Marco Rodríguez Barco

11 de junio de 2024.



**ANACAFÉ**  
GUATEMALA

# Soporte GIS

## Geolocalización

- Cartografía digital
- Digitalización cartográfica
- Cartografía colaborativa
- Soporte

## Monitoreo Forestal

- Gestión de plataformas
- Gestión de datos
- Estimación de pérdida arbórea 2020-2022 en área cafetalera.
- Aprendizaje sobre Copernicus

# Roadmap

1. Integrar datos existentes, coleccionar datos
2. Desarrollar sistemas con Tecnología híbrida.
3. Organizar geolocalización colaborativa
4. Desarrollar mecanismo de monitoreo forestal
5. Implementar.
6. Escalar

- Caficultores
- Competencias
- Soporte

Personas



- Satelitales
- Territorio
  
- Usuarios e interesados

Datos



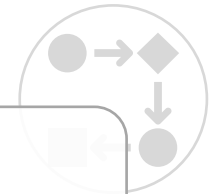
- Herramientas diversas
  
- Integración
- Interoperabilidad

Tecnologías



- Conocimiento
- Experiencias
  
- Flujos de trabajo

Procedimientos





-  FOREST CHANGE
-  LAND COVER
-  LAND USE
-  CLIMATE
-  BIODIVERSITY
-  EXPLORE
-  SEARCH
-  MY GFW

**LEGEND** | **ANALYSIS**

Tree cover loss - 2001-2023


- Tree cover loss

Mostrando Tree cover loss con la densidad del dosel arbóreo > 30%

2001 2004 2008 2012 2016 2020 2023

**PLANET SATELLITE IMAGERY (TROPICS)**  
MAR 2024




**SATELLITE IMAGERY**

-  **PLANET SATELLITE IMAGERY**  
Monthly high resolution basemaps (tropics)

PERIOD: Mar 2024

2023 2024  
Dec Jan Feb Mar

IMAGE TYPE: Natural color

-  **GOOGLE SATELLITE IMAGERY**  
Highest resolution imagery 1-3 years old (global)
-  **LANDSAT SATELLITE IMAGERY**  
Coarse resolution imagery (global)
-  **LANDSAT 8 / SENTINEL 2**  
Latest satellite imagery available from Sentinel-2 and Landsat 8



## Filtros

### Región

- Todas las regiones
- I
- II
- III
- IV
- V
- VI
- VII

### Departamento

Todos los departamentos

### Municipio

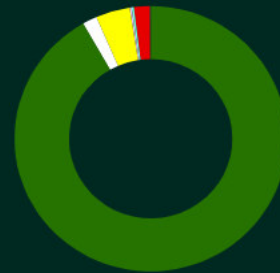
Todos los municipios

## Especie de café



Coffea arabica (Todas las variedades de arábigos)	98.26%
Coffea canephora (Robustas)	1.74%

## Arreglo

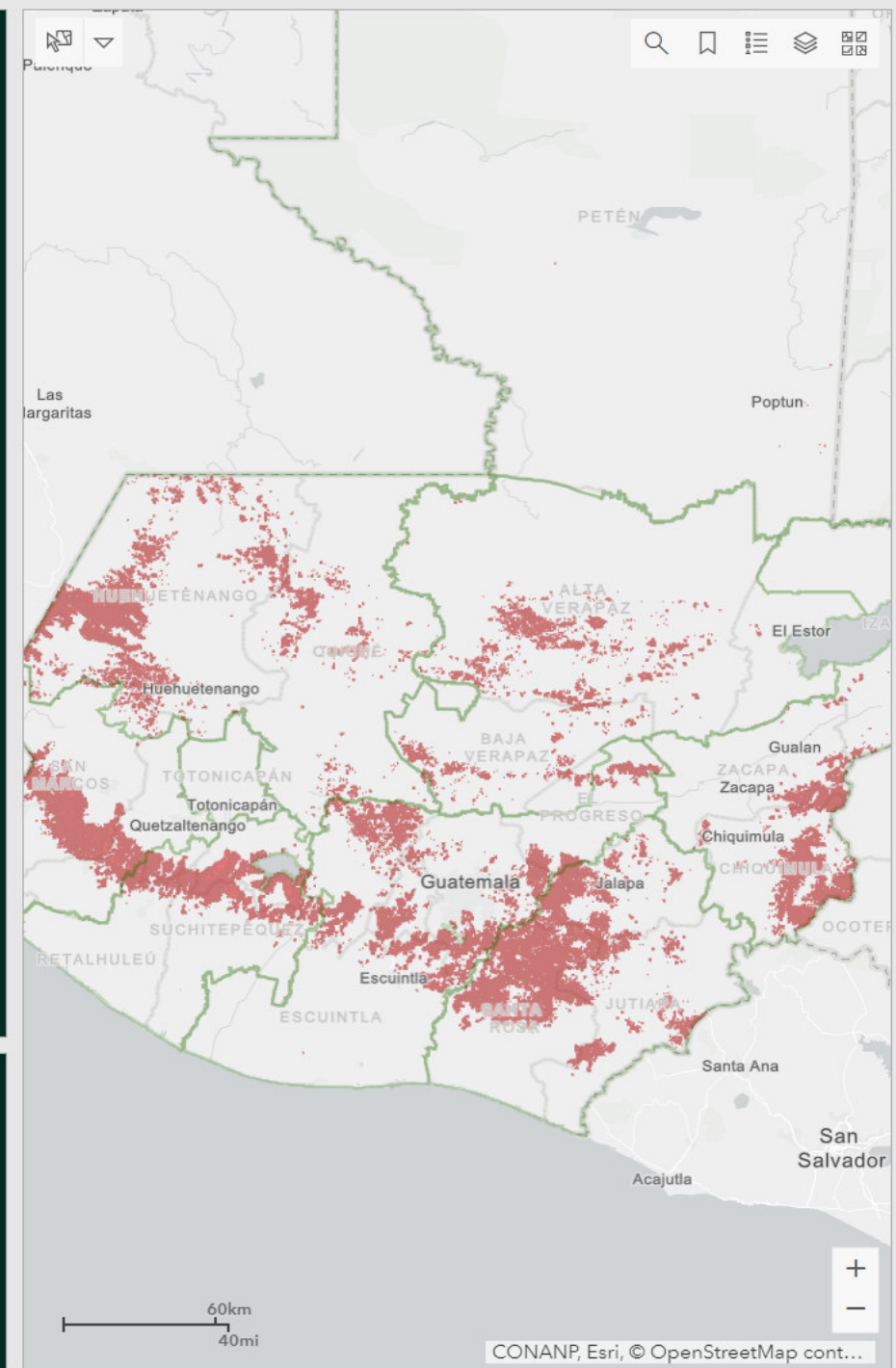


Cafetal con sombra	91.7%
Cafetal sin sombra	1.7%
Asocio banano o plátano	4.1%
Asocio cardamomo	0.2%
Asocio cacao	0%
Asocio hule	0.3%
Asocio macadamia	1.9%
Otro asocio	0.1%

Área con café  
**376,019**  
Hectáreas

Arábica  
**369,473**  
Hectáreas

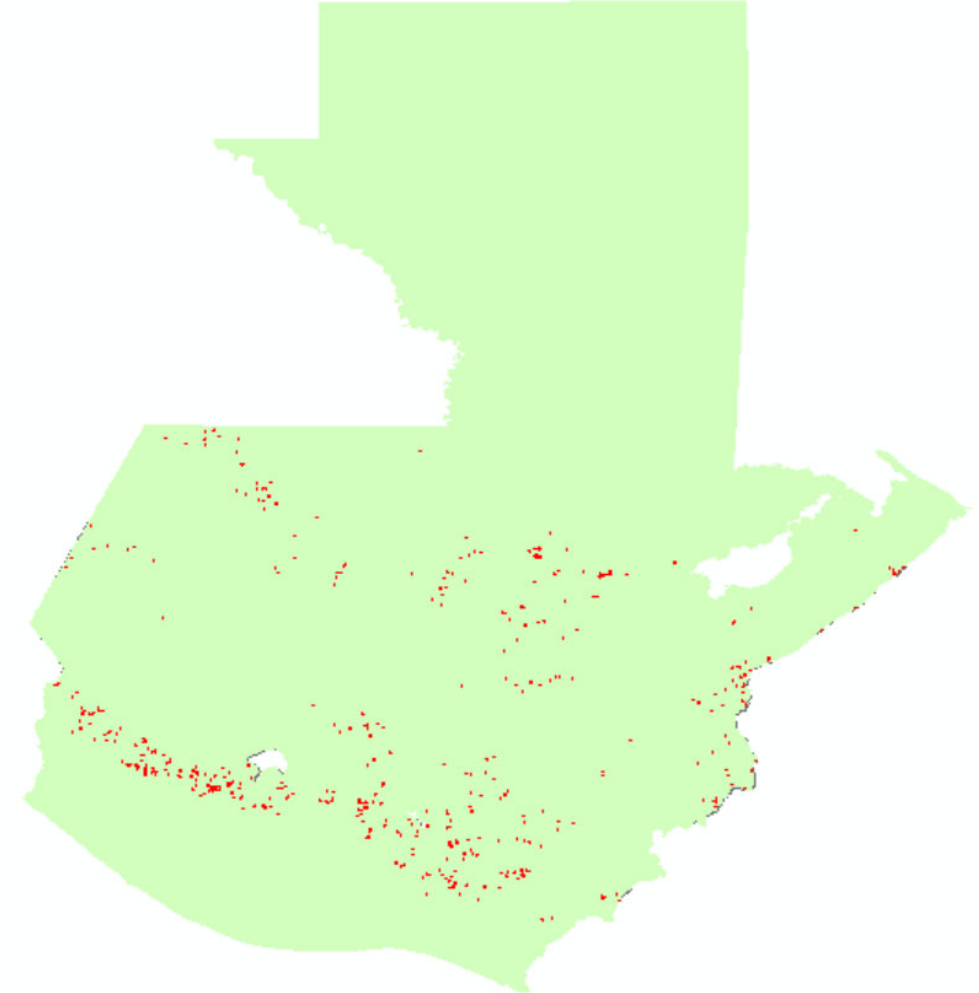
Robusta  
**6,546**  
Hectáreas



# Monitoreo de pérdida arbórea 2020-2022

Departamento	Hectáreas	Sitios
Santa Rosa	314	525
Alta Verapaz	275	733
Suchitepéquez	184	452
Quetzaltenango	120	230
San Marcos	115	232
Sacatepéquez	106	263
Huehuetenango	97	471
Zacapa	87	188
Chiquimula	72	288
Chimaltenango	66	237
Escuintla	63	233
Retalhuleu	60	115
Guatemala	59	208
Jutiapa	45	204
Baja Verapaz	43	106
Sololá	38	116
Quiché	35	231
Izabal	34	152
Jalapa	17	59
El Progreso	14	61
Petén	0	2
<b>Total general</b>	<b>1,844</b>	<b>5,106</b>

Area con café **376,019**  
 Pérdida arborea **0.49%**

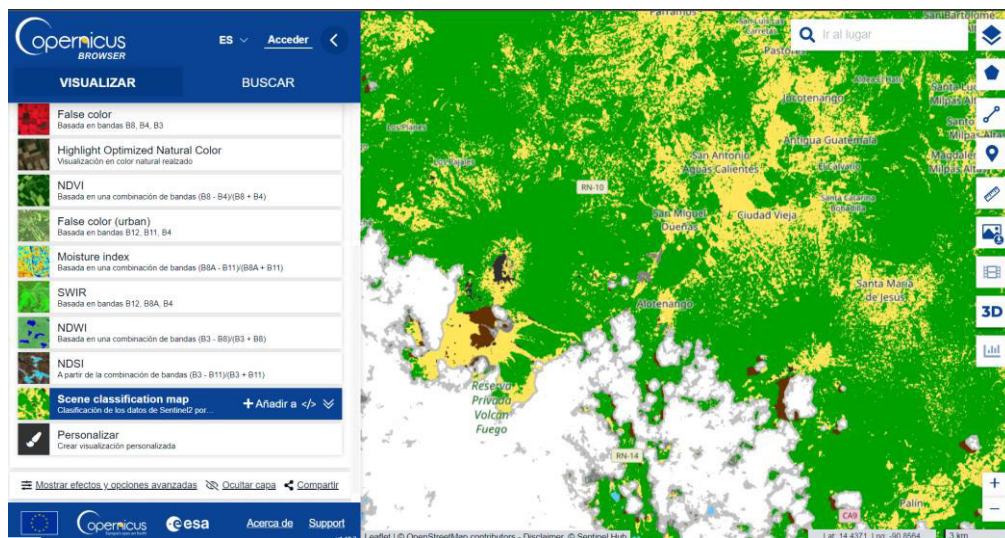


## FUENTES:

1. Mapa de café 2023, Guatemala, ANACAFÉ
2. Hansen, M. C., P. V. Potapov, R. Moore, M. Hancher, S. A. Turubanova, A. Tyukavina, D. Thau, S. V. Stehman, S. J. Goetz, T. R. Loveland, A. Kommareddy, A. Egorov, L. Chini, C. O. Justice, and J. R. G. Townshend. 2013. "High-Resolution Global Maps of 21st-Century Forest Cover Change." *Science* 342 (15 November): 850–53. Data available from: [earthenginepartners.appspot.com/science-2013-global-forest](http://earthenginepartners.appspot.com/science-2013-global-forest).

# INTEGRANDO ESFUERZOS

1. Curso Copernicus Clúster AFOLU
2. Webinar GIZ, buenas prácticas.
3. Taller delegación Guatemala UE
4. Informe de buenas prácticas CAMAGRO
5. Actualización de mapa de riesgo de deforestación 2021-2023.
6. Atención de requerimientos de geolocalización



# Marco Rodríguez Barco

[marco.frb@anacafe.org](mailto:marco.frb@anacafe.org)

+502 5966-5882



**ANACAFÉ**  
GUATEMALA

# ANACAFÉ

GUATEMALA





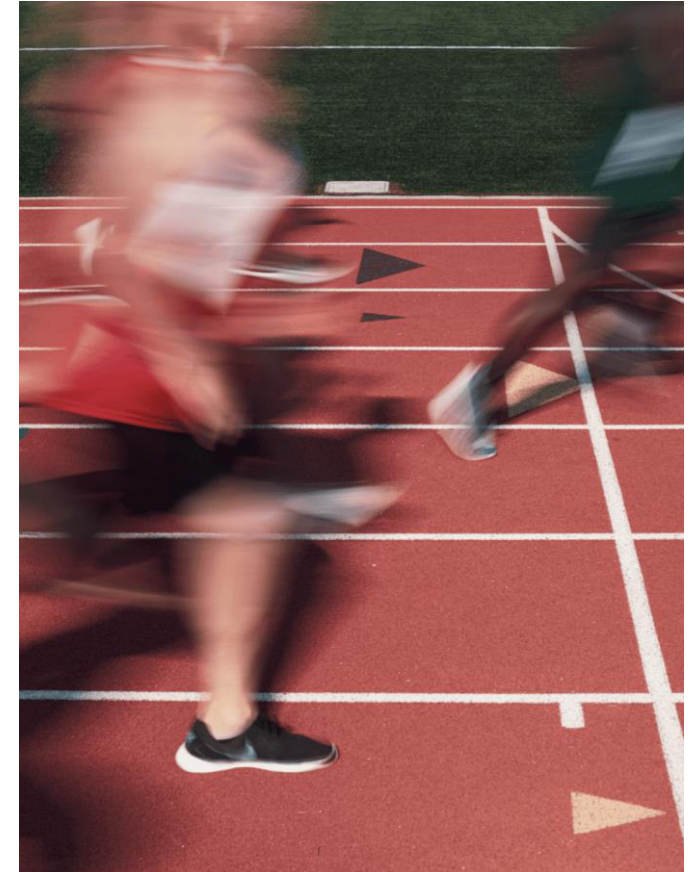
# How the Rainforest Alliance Supports EUDR Compliance from Farm to Retailer

*This presentation is provided for informational purposes only and does not constitute legal advice.*

January 2024

## We are ready!!

- ✓ More than 35 years working on prevention of deforestation around the world
- ✓ To meet the requirements of the European Union Regulation on Deforestation-free Products (EUDR) by December 2024—and **coffee and cocoa companies** can consider the Rainforest Alliance as your relay partner in the sprint.
- ✓ This legislation is an ambitious leap forward, but our teams are primed and ready to leverage the full potential of our systems to **help you on your course to compliance.**



# What Does the EUDR Mean for Companies?

**Objective:** To fight deforestation and forest degradation by mitigating the impact of EU consumption.

**How:** Strict requirements for companies that sell cocoa and coffee products to EU markets, or export them from the EU.

## Mandatory due diligence

Products must have a negligible risk of deforestation and be produced in accordance with relevant legislation of the country of production.

## Strict traceability

Precise GPS coordinates for all farm plots (polygons > 4 ha) where products were produced must be provided for each batch/shipment.

Operationalization via the “due diligence statement” to be uploaded on the EU information system.

# Areas of Alignment

Fortunately, the EUDR is already closely aligned with the approach embedded in our certification program—with some small yet crucial differences.

	<b>EUDR</b>	<b>Rainforest Alliance Certification</b>
<b>Scope</b>	Cattle, wood, palm oil, soy, rubber, cocoa, and coffee (including derived products)	<b>Coffee and cocoa</b>
<b>Definition of forest</b>	<b>FAO definition</b>	<b>FAO definition</b>
<b>Deforestation requirement</b>	Prohibits import/export and sale of products originating from deforested land	Prohibits deforestation on Rainforest Alliance Certified farms
<b>Cut-off date for deforestation</b>	<b>December 31, 2020</b>	<b>January 1, 2014</b>
<b>Legality</b>	Products must be produced in accordance with relevant legislation of the country of production	<ul style="list-style-type: none"> <li>• Certificate Holders must comply with applicable laws within the scope of the Rainforest Alliance 2020 Sustainable Agriculture Standard.</li> <li>• Farmers must have the legal or legitimate right to use the land</li> </ul>
<b>Risk assessment</b>	<b>Risk assessment</b> conducted by companies as part of their due diligence obligation	<b>Risk assessments</b> conducted by the Rainforest Alliance on deforestation + encroachment in protected areas

# Key Differences

Our expert teams are currently working to address the following differences between the EUDR requirements and those of our certification program (see slides [12-14](#)).

	EUDR	Rainforest Alliance Certification
<b>Traceability</b>	Product batches must be <b>linked to GPS farm plots</b> where they were produced	<b>Traceability back to farm/farm group</b> is possible (including data on Identify Preserved volumes), but not mandatory
<b>Exemptions</b>	<b>No exemptions</b>	<b>Minor conversion</b> for agricultural use allowed under limited circumstances
<b>Geodata requirements</b>	<b>GPS coordinates</b> for all farm plots	Geodata of at least 1 farm unit per <b>farm</b> , gradually working towards all <b>farm units with certified crops</b>
	<b>Polygons for farm plots &gt; 4ha</b>	<b>Polygons for all farm units</b> , starting gradually with minimum of 10% of farms in a group
	<b>6 decimal digits</b> for farm GPS coordinates	<b>4 decimal digits</b> for farm GPS coordinates

# Certification: A Crucial Step to EUDR Compliance

# Built-in Benefits of Rainforest Alliance Certification

The Rainforest Alliance Certification Program comes equipped with a range of tools and systems that can provide companies with complementary information needed for EUDR compliance:

- **Deforestation risk assessment** process supported by auditing
- Access to **the Rainforest Alliance's proprietary forest layers** for high-risk countries
- Comprehensive **end-to-end traceability** and third-party **audited chain of custody system** in place
- **For cocoa:** farm requirements in Côte d'Ivoire, Ghana, Nigeria and Cameroon are already aligned with **EUDR geodata requirements**

We are pleased to offer these mechanisms at **no extra cost** to our certified supply chain partners.

# For Farmers: EUDR Criteria for Cocoa and Coffee Certificate Holders

As of **January 15, 2024**, farmers are able to select [specific criteria](#) that align with EUDR requirements in the Rainforest Alliance Certification Platform (RACP).

## 1. Geo-location data

- Geodata for all farm units
- Farm units > 4 ha must have polygons
- Geodata to at least 6 decimal digits

## 2. Land conversion

- Farm Certificate Holders (who select EUDR-aligned criteria) will no longer be able to make use of our current allowance for “minor conversion” of land to agricultural use (see [Annex Chapter 6: Environment](#)) after the EUDR cut-off date.

## 3. No corruption

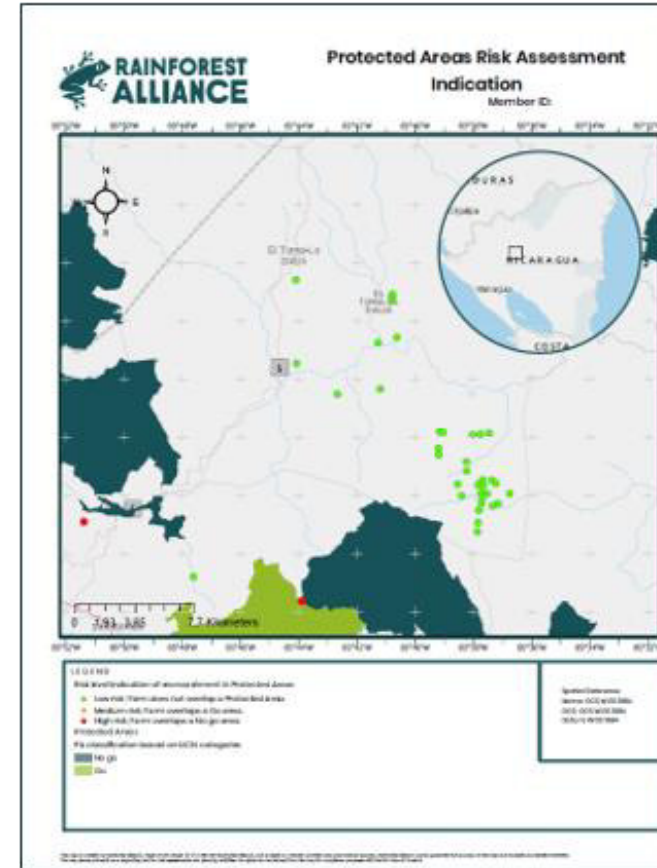
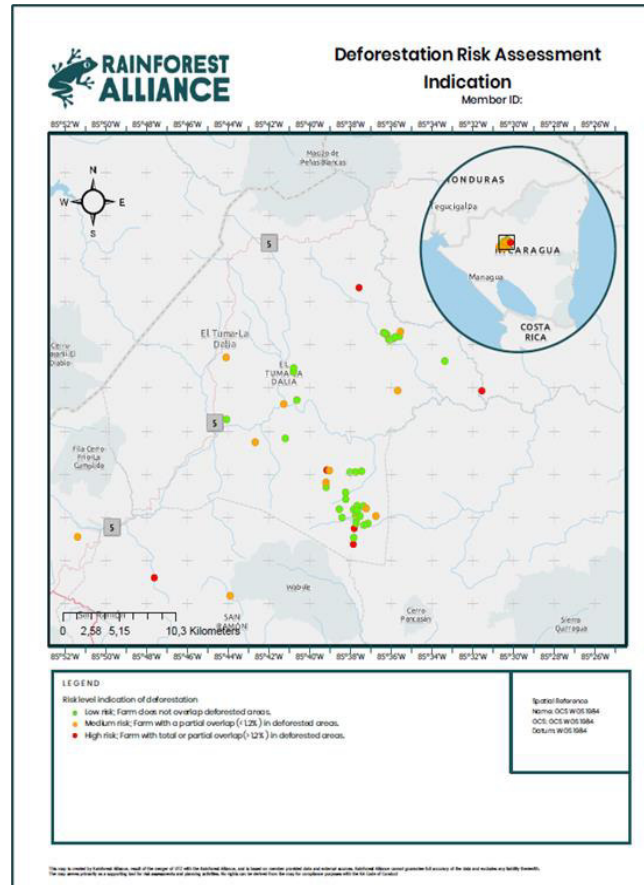
## 4. A system to pay required taxes and fees

By selecting these requirements, farmers agree to [allow the Rainforest Alliance to share specific data](#) required by EUDR with their supply chain.

# Forest and tree loss data layers

Dataset	Specifications	Definition
RA Forest Layer	Forest layer for risky countries. Spatial resolution: 10m	Forest: land spanning more than 0.5 hectares with trees higher than 5 meters and a canopy cover of more than 10 percent, or trees able to reach these thresholds in situ. It does not include land that is predominantly under agricultural or other land use. <sup>2</sup>
Copernicus Forest Layer	Forest layer for non-risky countries. Spatial resolution: 100m Version: 3.0	Forest; Based on the Forest Type layer. Using at least 10% tree cover density and using <i>Dominant Leaf Type</i> (DLT) layer together with FAO's forest definition to exclude and include areas.
Tree Cover Loss layer (TCL)	Hansen UMD Tree Cover Loss Spatial resolution: 30m Version: 2.0.7 Years: 2014 – 2019.	Tree cover: all vegetation greater than 5 meters in height and may take the form of natural forests or plantations across a range of canopy densities. Tree Cover Loss (TCL): is defined as "stand replacement disturbance," or the complete removal of tree cover canopy.

# Geodata Risk Assessment Results



Excel file including farm unit information & assessment results for each farm unit

# Legality Requirements



Esta foto de Autor desconocido está bajo licencia [CC BY-NC-ND](#)

- The Rainforest Alliance Standards and Assurance team conducted a lengthy gap analysis.
- **The goal of this analysis was to identify areas of overlap between the EUDR text and all binding Rainforest Alliance documentation on the topic of legality.**
- Our team found **65 criteria across all RA binding documents** which pertain to the additional due diligence requirements on **legality and related topics in the EUDR.**
- **We will plan to report conformities with these requirements back to Supply Chain Actors on an up to per transaction basis.**

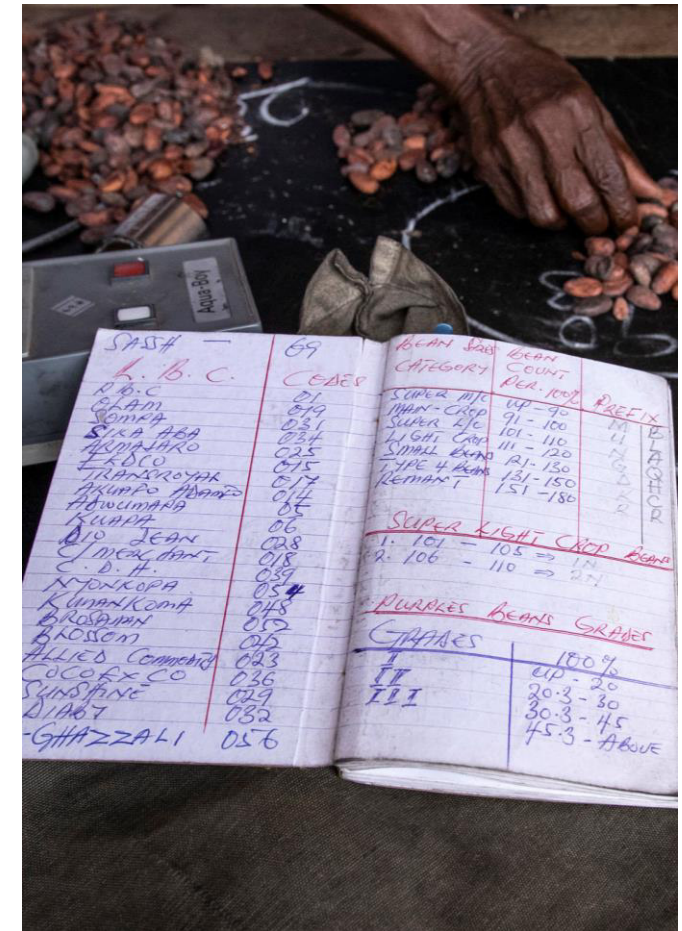
# EUDR Reporting for SCAs

# For companies: Supporting Evidence for Compliance

Our certification system already offers **complete traceability options**—and by December 30, 2024, supply chain stakeholders will be able to identify farm Certificate Holders who have selected the EUDR criteria in the RACP.

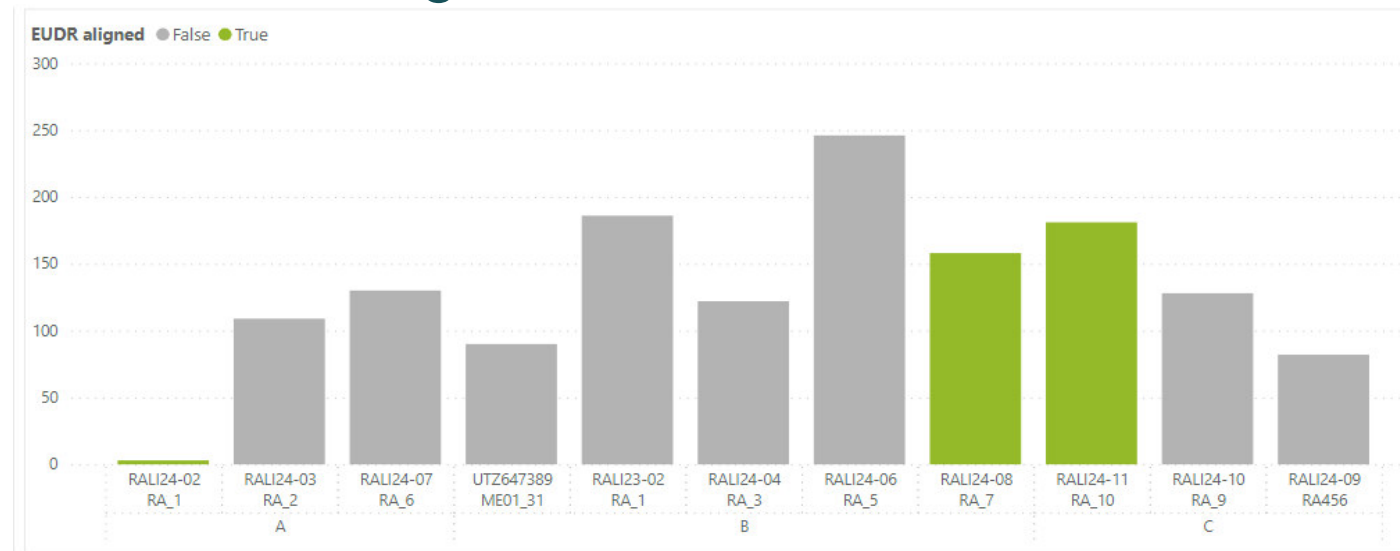
- Data formats will be compatible with the EU information system
- Supply chain actors who opt in to receive EUDR-aligned data in RACP will agree to limit the use of this data to EUDR compliance
- Supply chain actors must transact traceability as “Identity Preserved” or “Mixed Identity Preserved” in the Rainforest Alliance traceability system (MultiTrace)

*Rainforest Alliance is not responsible for and assumes no liability for companies' EUDR compliance obligations*



# Setting the stage – SCA perspective

In 2024, a SCA has 3 IP cocoa transactions (single and multi-ingredient/confirmed and to be confirmed) A, B, and C, and has opted in EUDR offering. In the SCA's supply chain there are 3 farm CHs that are EUDR aligned.



EUDR report compliance and geodata for only those 3 licenses.

# Setting the stage – Farm perspective

The information of the 3 Farm CHs that are EUDR aligned will be shared for the farm units producing coffee or cocoa.


- Geodata: Points for farm units smaller than 4 Ha., and polygons from farm units bigger than 4 Ha. **Worst case scenario, only Farm units with points will be shared.**
- Compliance: EUDR relevant compliance and NC.

License	farmid	Crop	Long	Lat	HA
RALI24-02	1	Cocoa	28.078901	-16.382829	0.08
RALI24-02	4	Cocoa	28.118777	-14.475743	1
RALI24-11	3544312	Cocoa	28.321119	-14.999977	0.8
RALI24-08	hret	Cocoa	28.333546	-15.090871	2.4
RALI24-02	5	Cocoa	28.567577	-16.232344	0.4
RALI24-02	2	Cocoa	28.674783	-15.999676	0.12
RALI24-02	6	Cocoa	29.010123	-16.000345	0.23
RALI24-08	rhbfsd	Cocoa	29.60		
RALI24-08	rkjfbc	Cocoa	29.80		
RALI24-02	3	Coconut	29.84		

License	requirement	Conformity status
RALI24-02	1	C
RALI24-02	2	C
RALI24-02	3	C
RALI24-02	4	C
RALI24-02	7	C
RALI24-02	8	C
RALI24-02	9	C
RALI24-02	10	C
RALI24-02	6	N/A
RALI24-02	5	NC
RALI24-08	1	C
RALI24-08	2	C
RALI24-08	3	C
RALI24-08	4	C
RALI24-08	5	C
RALI24-08	6	C
RALI24-08	7	C
RALI24-08	8	C
RALI24-08	9	C
RALI24-08	10	C

# Mock-up (Coffee)



Account ID

Country

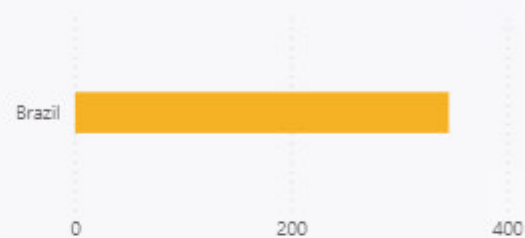
Reference / Transaction

Transaction date

Crop

### Purchased volume from EUDR aligned Farm CHs

Crop ● Coffee



### Geodata

Reference	Farm CH ID	Farm	Ha.	Latitude	Longitude	Deforestation risk
ab	RA_11	11	2.192	-12.394954	30.981731	Low
ab	RA_11	12	2.400909091	-12.094504	30.981429	Medium
ab	RA_11	13	2.609818182	-11.756579	30.231731	Medium
ab	RA_11	14	2.818727273	-11.596799	29.981630	High
ab	RA_11	15	0.12	-12.086754	29.606630	Medium
bn	RA_71	cnh	0.3	-12.432020	29.231630	Medium
bn	RA_71	mut	3.445454545	-11.999931	28.856630	Low

### RA Standard Compliance of EUDR-related requirements

transaction ID	Reference	CH_ft_ID	License_fp	requirement	Conformity status	NC closed
BB	fd	RA_78	RALI24-32	2	C	
BB	fd	RA_78	RALI24-32	3	NC	23-May-24
BB	fd	RA_78	RALI24-32	4	C	
BB	fd	RA_78	RALI24-32	5	C	
BB	fd	RA_78	RALI24-32	6	N/A	
BB	fd	RA_78	RALI24-32	7	C	
BB	fd	RA_78	RALI24-32	8	NC	23-May-24
BB	fd	RA_78	RALI24-32	9	C	
BB	fd	RA_78	RALI24-32	10	C	
C	fd	RA_10	RALI24-11	1	C	



# How You Can Prepare

## For Farmers: Sow the Seeds

Companies are responsible for EUDR compliance, but farmers can also help anticipate the needs of their buyers:

- 1. Open dialogue with customers:** Initiate discussions with your buyers to understand if they would like you to pursue self-selection of criteria aligned with EUDR requirements.
- 2. Begin geodata collection:** Start to collect geospatial data that will be required in the EUDR self-selected criteria; search for necessary support to do so from customers, local service providers, etc.
- 3. Clarify certification benefits:** Ensure a comprehensive understanding of how our certification system can benefit you and your supply chain in meeting EUDR compliance. We're here to help.

## For Companies: Lay the Groundwork

To meet the December 2024 deadline, companies should immediately action the following four measures to help facilitate compliance.

- 1. Prioritize Identity Preserved audits:** Take immediate steps to enhance your company's traceability efforts to include Identity Preserved and Mixed Identity Preserved volumes, if your customers are interested in accessing EUDR-related data.
- 2. Engage your farm base and other suppliers:** Encourage your farm suppliers to select EUDR-aligned requirements in RACP; encourage other suppliers to do the same and to enhance their traceability efforts to include Identity Preserved and Mixed Identity Preserved audits.
- 3. Facilitate geodata collection at farm level:** Actively support your supply base in the collection and submission of geospatial data in line with EUDR requirements
- 4. Clarify certification benefits:** Ensure internal and external stakeholders have a comprehensive understanding of how Rainforest Alliance certification can benefit you and your supply chain in meeting EUDR compliance.

## Questions?

- Check out our full [FAQ](#)
- Reach out to your Rainforest Alliance account manager—or contact our Customer Success team at [customersuccess@ra.org](mailto:customersuccess@ra.org)
- Discover our other pathways toward [deforestation-free supply chains](#)



**Thank you.**